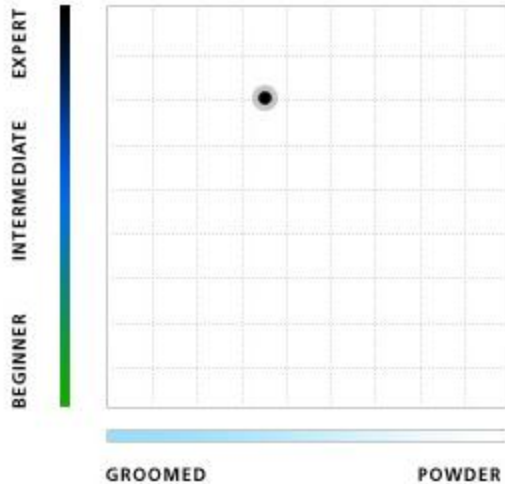


## The Grizzly

### Details

Thanks to Motion IPT Wideride and a shape of 131-89-114mm, the Grizzly is wide enough to float through powder, but can also carve on hard, groomed snow with ease. Its versatility is increased even further by Power Switch Technology with three settings for on the fly power adjustment.



### LENGTH

163  
170  
177  
184

### RADIUS

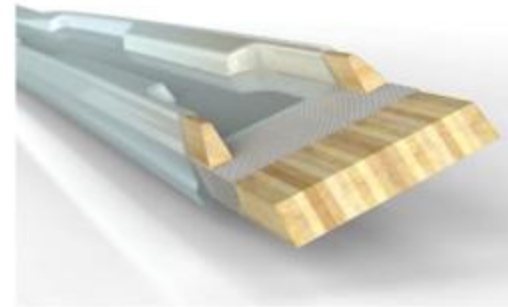
15.4  
17.0  
18.7  
20.3

### SIDECUT

131-89-114  
131-89-114  
131-89-114  
131-89-114



Extended Sensorwood Cores are created in a complex CNC milling process. The highly sophisticated milling program enables Vökl to produce wood cores with extreme precision. They are "extended" upward and lengthwise, milled to form the chambers of the Extended Double Grip construction. The core consists of a blend of poplar and beech wood, and is found in Vökl's highest performing models.



### Extended Double Grip

The unique Motion IPT interface allowed Vökl engineers to further develop our signature Double Grip construction, creating Extended Double Grip. The added height extends from tip to tail, placing more material where it's needed - in support of the edges. Featured in conjunction with various Motion IPT and eMotion systems.



### FULL CAMBER

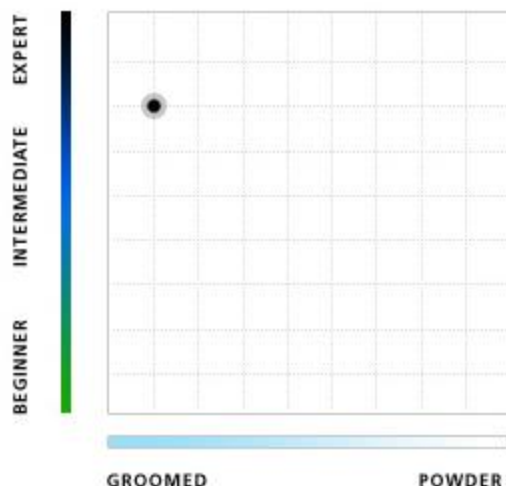


## Racetiger Speedwall SL



### Details

Featuring the all-new Speedwall sidewall technology along with our new rMotion binding system, the new Racetiger SL Speedwall is an incredibly nimble, yet forgiving slalom ski for making quick turns all over the mountain.



Like the Extended Sensorwood Core, the Sensorwood core is CNC milled using vertically laminated poplar and beech wood.

### Power Construction

Völkl's longest-running construction, Power Construction utilizes traditional vertical sidewalls and a torsion box internal layup. Used in racing skis as well as all the freeskiing models, this versatile, proven construction provides tremendous grip and stability when combined with the Sensorwood core.

Developed jointly by Marker and Völkl specifically to fit the new Racetiger models. Not surprisingly, it draws most of its features from World Cup components. rMotion ensures the maximum contact width via a new race plate that is a hybrid between the Marker World Cup plate and a Motion system. The plate functions just like a race plate, giving the skier additional leverage, plus acceleration at the end of the turn.

### LENGTH

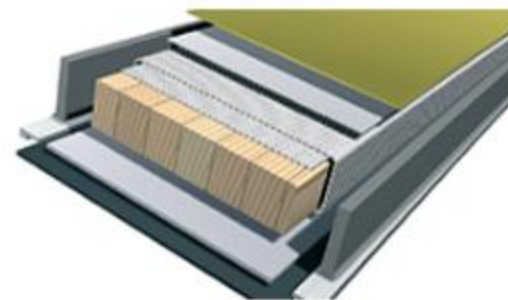
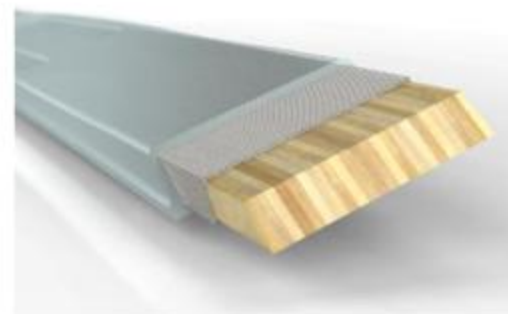
150  
155  
160  
165  
170

### RADIUS

11.4  
12.2  
12.9  
13  
13.7

### SIDECUT

115-66-98  
115-66-98  
115-66-98  
118-66-101  
118-66-101

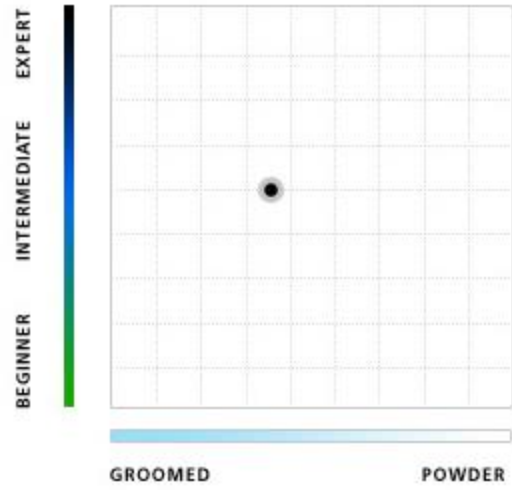


Estrella Green LADY



Details

The Estrella is for the advanced skier who wants a game improvement, all-conditions ski that remains a fun ride once she improves. It features Bio-Logic technology's improved stance, geometry and flex, all working together to reduce fatigue and improve performance.



As the name suggests, the Dual Wood Core consists of parallel strips of wood surrounded by PU. Featured in the Power Grip construction, it is sandwiched between glass layers top and bottom.

Power Grip

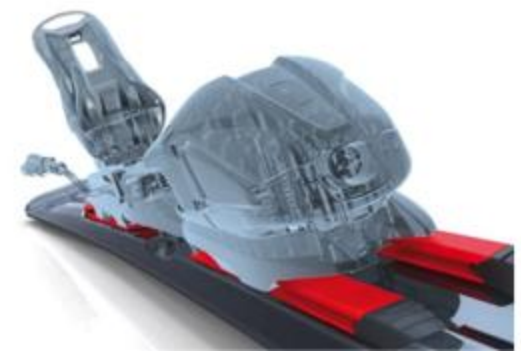
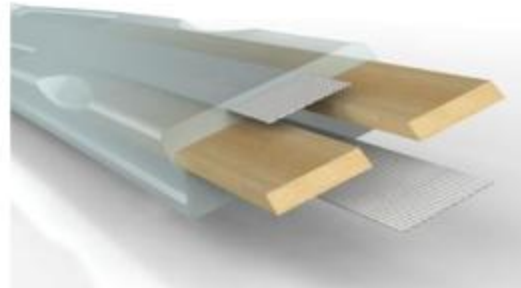
All skis with 3Motion feature Power Grip™ construction, which improves power delivery to the edge with a unique 3 Dimensional design. As with Extended Double Grip, the segmented Motion interface allows the ski to be shaped with more material supporting the edge, for better edge grip and smoother turns. n IPT and eMotion systems.

The 3Motion system takes what Vökl engineers learned in creating Motion IPT and applies it to our mid-range skis. A segmented interface makes it possible to deliver better performance through more uniform ski flex under the foot. 3Motion was developed in conjunction with Power Grip construction technology, which, like Extended Double Grip, utilizes more material over the edge to provide better edge grip.

LENGTH  
144  
151  
158  
165

RADIUS  
12.3  
13.3  
14.8  
16.4

SIDECUT  
124-73-94  
124-73-94  
124-73-94  
124-73-94

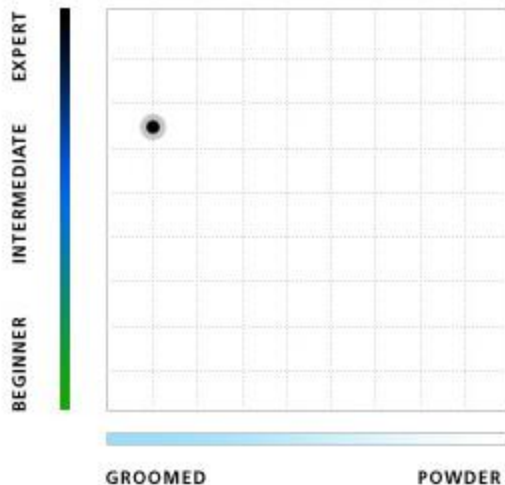


## Racetiger GS Race Stock JR



### Details

Adhering to the stringent F.I.S. and USSA limits for racing sidecuts, the junior GS Race Stock ski measures up in every size. The favored GS ski of future champions around the country. Comes with the Marker Jr. Race interface.



Like the Extended Sensorwood Core, the Sensorwood core is CNC milled using vertically laminated poplar and beech wood.

### Power Construction

Voelkl's longest-running construction, Power Construction utilizes traditional vertical sidewalls and a torsion box internal layup. Used in racing skis as well as all the freeskiing models, this versatile, proven construction provides tremendous grip and stability when combined with the Sensorwood core.

### LENGTH

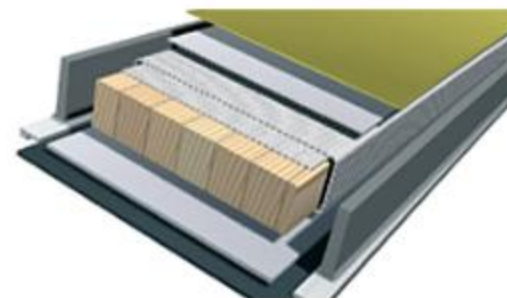
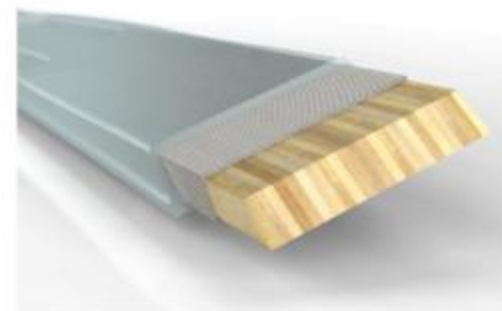
156  
163  
170

### RADIUS

FIS Reg  
FIS Reg  
FIS Reg

### SIDECUT

108-68-94  
108-68-94  
108-68-94

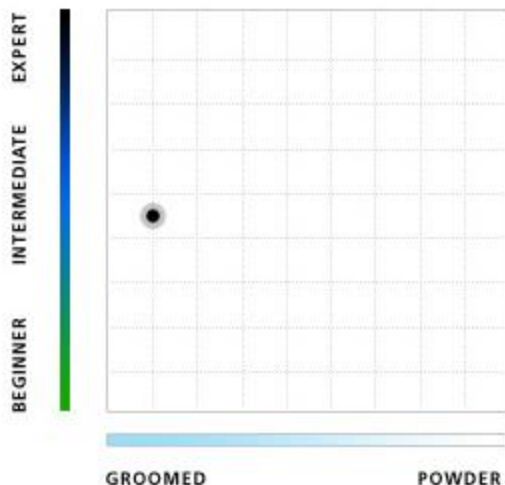


## Racetiger Junior



### Details

For young racers who are not ready for the race stock models, the Racetiger Jr. comes in sizes 100 to 150. It's a nice, soft ride for kids as they learn to race.



### Power Shell Construction

Völkl's Power Shell Construction utilizes a full cap shell, without a vertical sidewall. This design allows for an easy, round flex pattern, with an extremely friendly ride quality.

### LENGTH

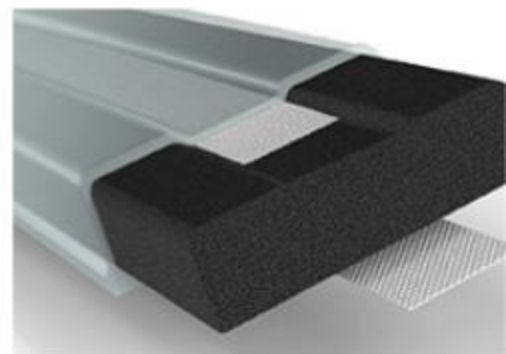
100  
110  
120  
130  
140  
150

### RADIUS

6.3  
7.9  
9.7  
10.4  
12.4  
14.5

### SIDECUT

102-66-86  
102-66-86  
102-66-86  
104-67-92  
104-67-92  
104-67-92



# Mantra

## Details

The Mantra is the pinnacle product for the skier who wants to ski the deep stuff, yet still have a solid, all-mountain feel on the front of the mountain. Still unparalleled in the market, it's the go-to ski for those who want a powder ski that is versatile enough to ski hard on groomed terrain as well.

### LENGTH

170  
177  
184  
191

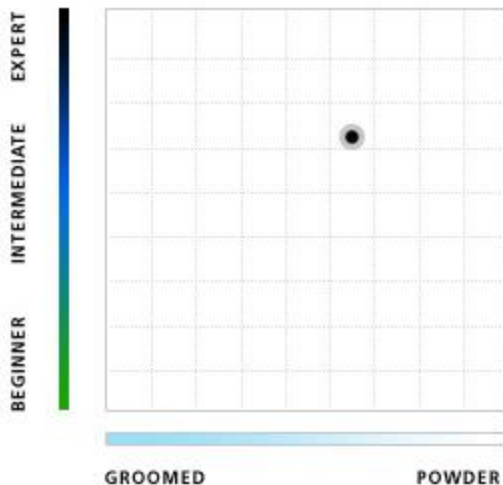


### RADIUS

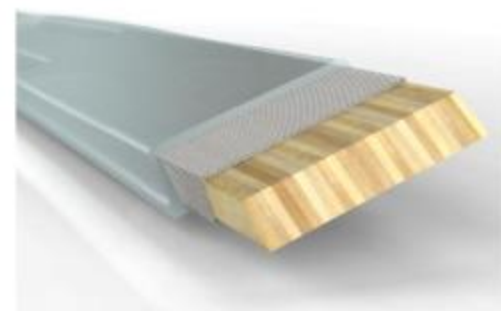
18.2  
20.3  
22.5  
24.8

### SIDECUT

133-96-116  
133-96-116  
133-96-116  
133-96-116

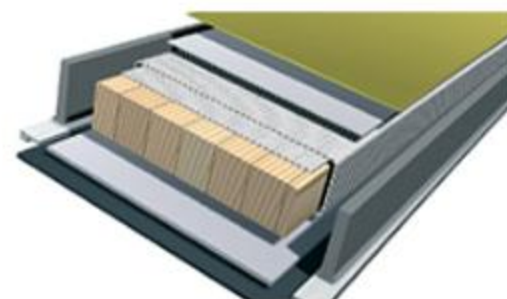


Like the Extended Sensorwood Core, the Sensorwood core is CNC milled using vertically laminated poplar and beech wood.



### Power Construction

Völkl's longest-running construction, Power Construction utilizes traditional vertical sidewalls and a torsion box internal layup. Used in racing skis as well as all the freeskiing models, this versatile, proven construction provides tremendous grip and stability when combined with the Sensorwood core.



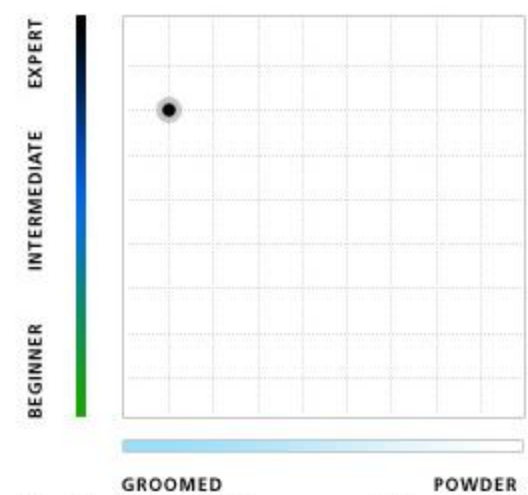
This ski has been recognized by the following publications



# Racetiger Speedwall GS

## Details

Made of a proprietary composite sintered base material, Speedwall sidewalls are the latest in a long line of innovations from Völkl's race department. The new Racetiger GS Speedwall features a new shape and vertical sidewall construction to deliver an incredibly fast, yet comfortable ride for the expert skier and night league racer alike. The new rMotion binding system combines race plate technology with the Motion system's all-mountain versatility.



Like the Extended Sensorwood Core, the Sensorwood core is CNC milled using vertically laminated poplar and beech wood.

### Power Construction

Völkl's longest-running construction, Power Construction utilizes traditional vertical sidewalls and a torsion box internal layout. Used in racing skis as well as all the freeskiing models, this versatile, proven construction provides tremendous grip and stability when combined with the Sensorwood core.

Developed jointly by Marker and Völkl specifically to fit the new Racetiger models. Not surprisingly, it draws most of its features from World Cup components. rMotion ensures the maximum contact width via a new race plate that is a hybrid between the Marker World Cup plate and a Motion system. The plate functions just like a race plate, giving the skier additional leverage, plus acceleration at the end of the turn.

### LENGTH

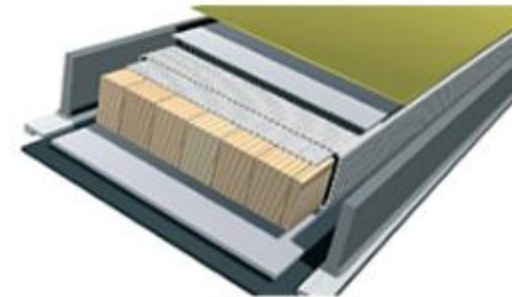
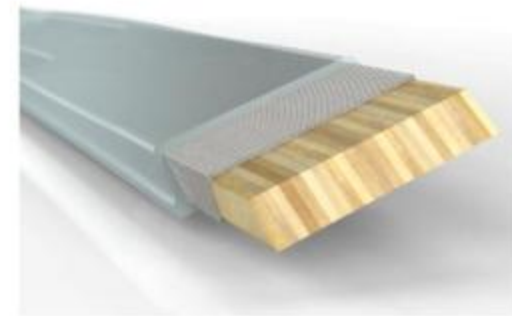
- 165
- 170
- 175
- 180
- 185

### RADIUS

- 16.3
- 17.4
- 17.5
- 18.6
- 19.8

### SIDECUT

- 113-68-95
- 113-68-95
- 115-68-97
- 115-68-97
- 115-68-97

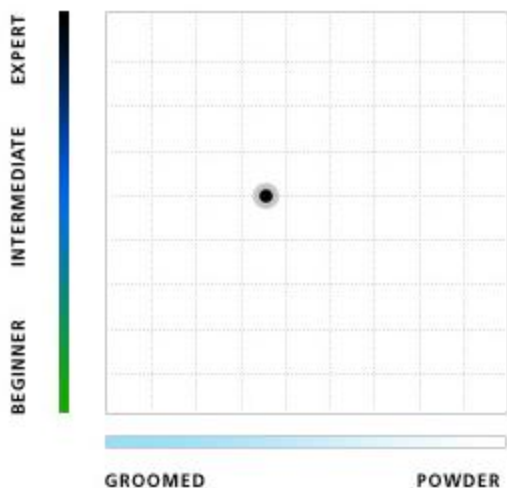


## SOL LADY



### Details

Featuring Bio-Logic technology and the extremely light weight Attiva 3Motion binding system, the Sol suits intermediate to advanced women who want to improve their skiing in a variety of conditions. Game improvement does not come at the expense of performance - the Sol features a full Sensorwood Light core, so as the skier improves there's plenty of performance.



### LENGTH

144  
151  
158  
165

### RADIUS

12.2  
13.2  
14.7  
16.4

### SIDECUT

126-75-96  
126-75-96  
126-75-96  
126-75-96



### PROGRESSive Flex

At the tail, the ski's profile becomes very thin in the middle - torsionally soft for the last 7cm, allowing the skier to exit the turn at will. The ski accelerates less aggressively out of the turn to help prevent the skier from sitting in the proverbial "back seat". The skier can make better turns with less effort.

progressive technology



### PROGRESSive Edge

Progressive Edge utilizes an early rise concept in the tip of the ski. Bringing the widest part of the ski up a little higher ensures easier directional stability, and the tip only engages when the ski is on edge, adding to the skier's comfort level.



### Power Grip

All skis with 3Motion feature Power Grip™ construction, which improves power delivery to the edge with a unique 3 Dimensional design. As with Extended Double Grip, the segmented Motion interface allows the ski to be shaped with more material supporting the edge, for better edge grip and smoother turns. n IPT and eMotion systems.

